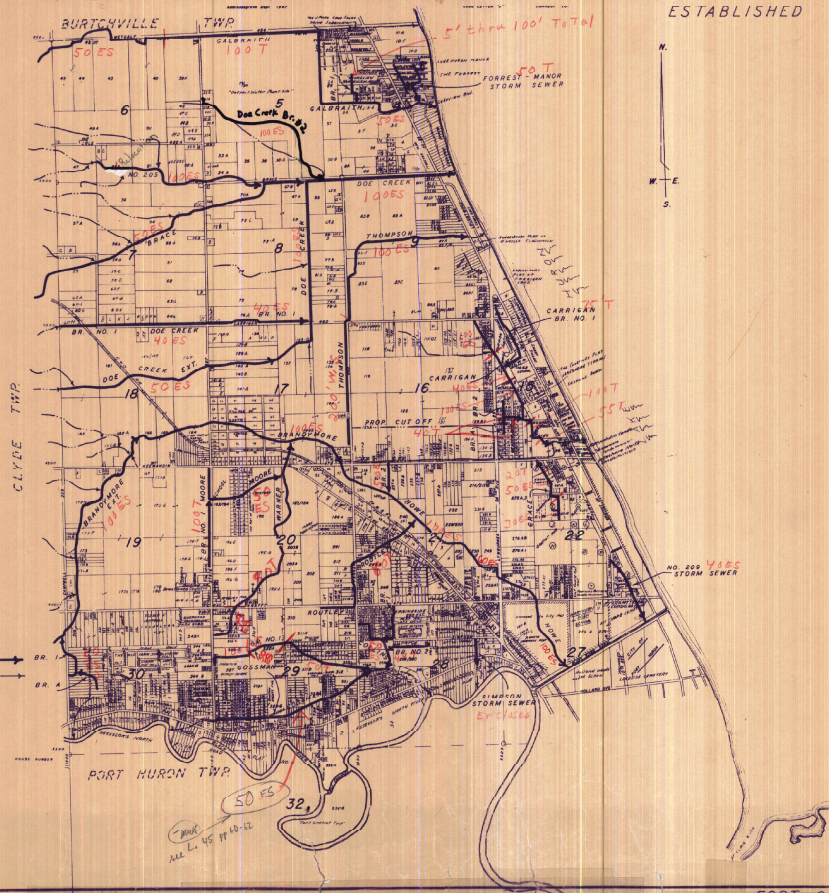


FORT GRATIOT TOWNSHIP T.7N.,R.17E., ST. LAIR COUNTY, MICH. SCALE 1"=2000'

ESTABLISHED COUNTY DRAINS



COUNTY DRAINS
WATERCOURSE

DRAINS CORRECT TO 9-84

FORT GRATIOT TOWNSHIP

1

15